



# YOUR PARTNER IN CONSTRUCTION

## **Baupartner d.o.o.**

Our main activity is the design and production of pre-stressed reinforced concrete and steel constructions of high standards.

---

info@baupartner.ba | www.baupartner.ba





*“ We build the quality. ”*

# Catalogue content

05 About Us

06 Manufacturing Facilities

08 Reinforced Concrete  
Assembly Structures

10 Steel Constructions

12 Turnkey

14 Pre-stressed Hollow Core Slabs

16 Structures

86 Certificates

Our commitment to quality, innovation and sustainability enables us to deliver products and services which meet the highest standards, and at the same time ensure long-term reliability and efficiency for our clients.

*“ We build for  
the future! “*





The construction technology used by the Baupartner company is by evaluations 30% faster, cheaper and better in quality than standard traditional construction.

The manufacturing programme of concrete elements allows great flexibility in the application of constructions and allows freedom in shaping the form of facilities.



## About us

Dear customers, partners, and friends of Baupartner, The company Baupartner Ltd. was founded in 2010. Our primary field of activity is the manufacturing of pre-stressed reinforced concrete and steel constructions.

Baupartner is not only the “manufacturer” but also the designer and bidder of complete solutions. Thanks to the high level of flexibility and great quality, we have become a competent and efficient civil engineering partner in Bosnia and Herzegovina, Serbia, and Croatia.

Baupartner introduced the quality system ISO 9001:2015 in all segments of its business, and we also introduced the Certificate of Conformity of Factory Production Control according to EN. Apart from the company seat in Bosnia and Herzegovina, we also have a branch office in Serbia named S-Baupartner Mont Ltd. and a branch office in Croatia named H-Baupartner Ltd.

Thanks to our team and manufacturing capacities, Baupartner is ready to respond to all market requests regardless of size and structure complexity. A special service is a “Turnkey” system where the company takes care of the investment from its beginning until the end, delivering the facility ready for use to its investor.

Apart from that, Baupartner provides a wide range of other services such as engineering, design, supervision and consultation services.

Today, Baupartner employs over 300 permanent workers of which 60 are with higher education. We aim to extend human and manufacturing capacities further.





# Manufacturing facilities

Facility for manufacturing reinforced concrete assembly constructions;

Facility for manufacturing of steel constructions;

Facility for manufacturing of pre-stressed hollow core slabs.

## DETAILS ON PRODUCTION PLANTS AND THEIR INFRASTRUCTURE

The manufacturing is placed on 70,000.00 m<sup>2</sup> of land, and the total surface of administrative and manufacturing facilities is 23,000.00 m<sup>2</sup> with an additional 7,000.00 m<sup>2</sup> of the open depot with a manipulative area covered by portal cranes. Manufacturing facilities were built from 2014 until 2024.

### MONTHLY MANUFACTURING CAPACITIES:

- 30,000 m<sup>2</sup> of assembly constructions;
- 800 tons of processed reinforcement;
- 12,000 m<sup>2</sup> of pre-stressed hollow core slabs;
- Concrete fabrication plant 1: 90 m<sup>3</sup> of concrete per hour;
- Concrete fabrication plant 2: 90 m<sup>3</sup> of concrete per hour;

*“Baupartner provides reliable support for projects of all sizes and complexities, providing on-time delivery and maximum efficiency in every segment..”*

## Steel constructions program

The monthly capacity of steel construction manufacturing varies between 100 and 140 tons depending on the type and construction complexity. The manufacturing of metal constructions takes place in the fully equipped manufacturing hall with bridge cranes of loading capacities between 5 and 12 tons. Apart from cranes, we own equipment for cutting profiles and tins, welding and sandblasting, and profile shot blasting.

Thanks to the development and investment in the manufacturing facility, Baupartner is able to produce various types of steel constructions for all types of buildings, and mould equipment for the manufacture of reinforced concrete structures.

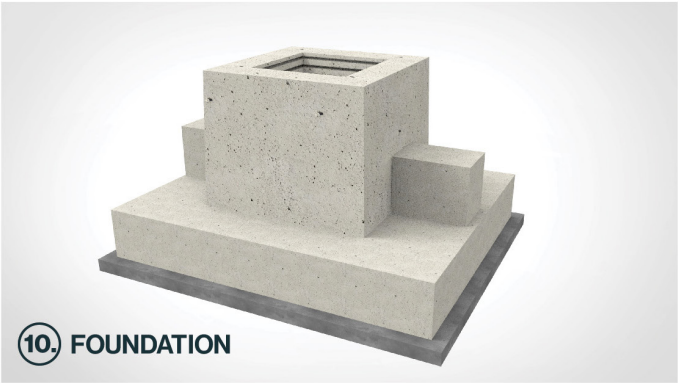
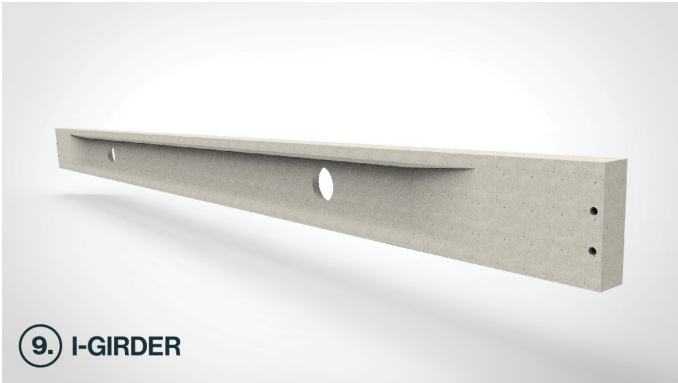
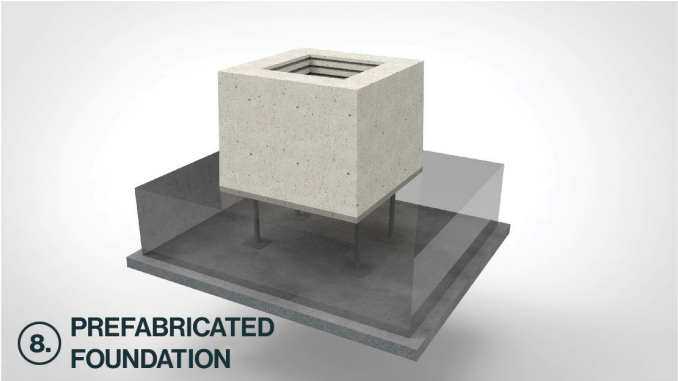
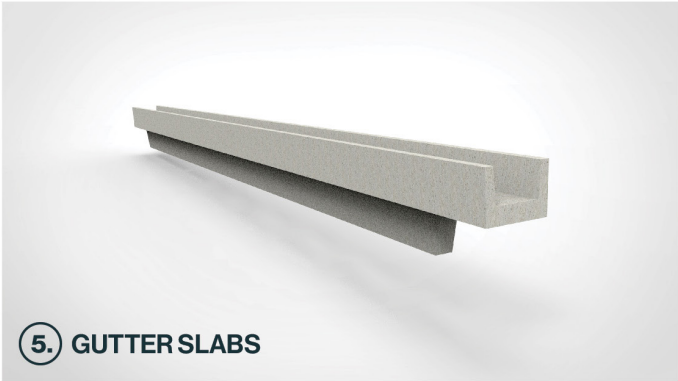
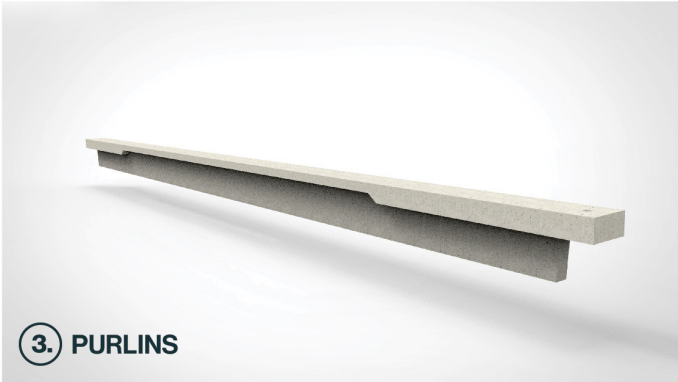
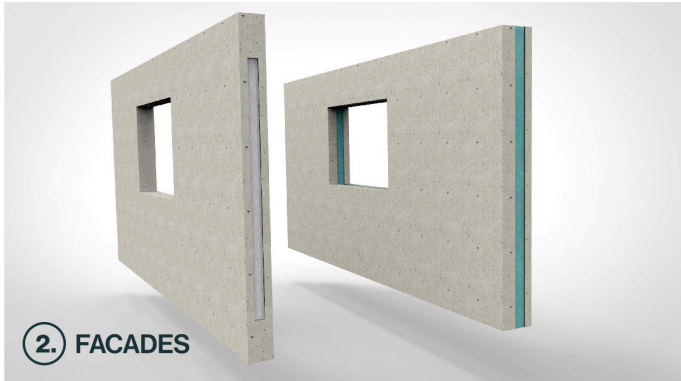
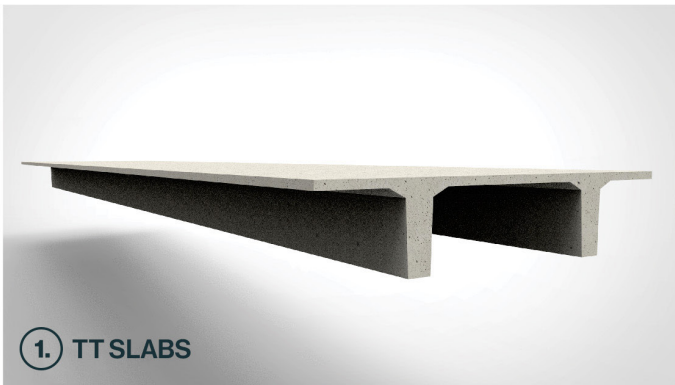
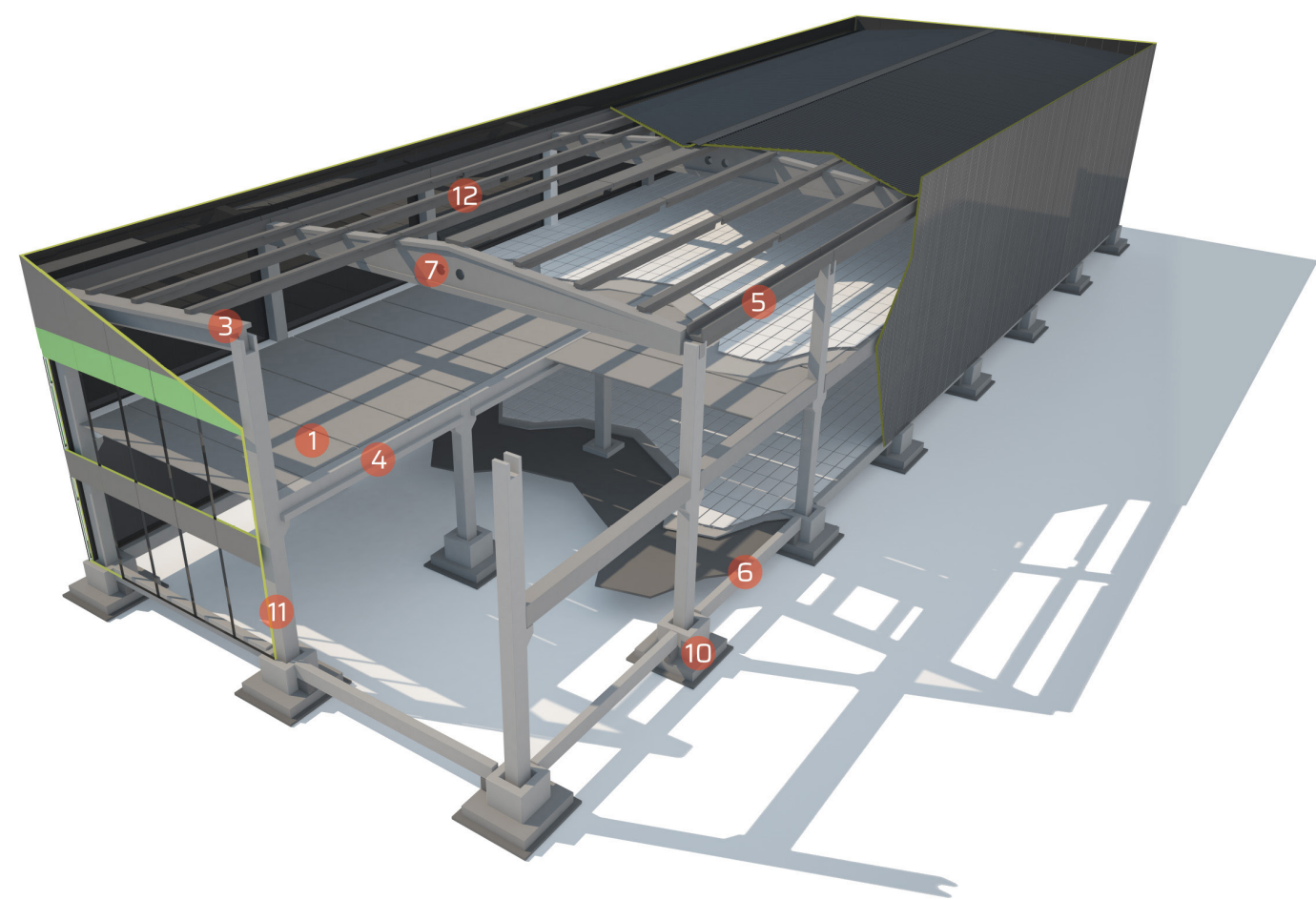
## Logistics

Baupartner has a modern-equipped logistics fleet with over 100 transport units, nine mobile cranes, and specialised tow trucks for the transportation of long and heavy elements. Our equipment enables efficient transportation of steel constructions, reinforced concrete elements, and other construction products with a high level of precision and safety.





# Reinforced Concrete Constructions







# Steel constructions

## TECHNOLOGY:

- ✓ Professional and experienced engineering staff;
- ✓ Personal design and statistic calculations;
- ✓ Personal technical office and processing of documentation;
- ✓ High productivity and product quality;
- ✓ Quality control and quality management;
- ✓ Verified suppliers;
- ✓ Welding technology;
- ✓ Certified welders and locksmiths;
- ✓ Input, interphase, and output product control;
- ✓ NDT testing of welds;
- ✓ ISO 9001:2008 Certificate;
- ✓ EN 1090-2 Certificate;
- ✓ EN ISO 3834-2 Certificate.

## ASSEMBLY:

- ✓ Managed by an experienced engineering team;
- ✓ Certified assembly workers, crane operators, and construction workers;
- ✓ Personal assembly equipment;
- ✓ High level of security at work.



Baupartner has long-lasting experience and great possibilities of manufacturing metal parts and welded steel constructions for the needs of various industries, respecting all the required norms and specific needs of its clients. By operations of mechanical processing of metals such as cutting, drilling, angular bending, perforating, MIG/MAG/TIG welding, sandblasting, and shot blasting, and by operations of protection against corrosion we manufacture various types of products such as:

- ✓ Heat exchangers;
- ✓ Grain tanks, bunkers, hoppers, transporters;
- ✓ Vehicle superstructures;
- ✓ Light, medium and heavy steel constructions.



# Building by the “turnkey” system

Building by the turnkey system means that our company performs all the working activities during the construction of your facility and after the technical acceptance, the purchaser gets the completed building ready for use.

By working this way, Baupartner guarantees the quality of all the working activities and mutual compliance of all the items and materials. All the working activities are performed according to the project documentation and agreed terms. Our policy also includes suggesting alternatives for consideration, where better solutions and savings are, by our experience, possible.



We do most of our work with our own employees and equipment that provides the highest level of quality and the lowest price. Baupartner collaborates with competent subcontractors, enabling us to provide competent prices for our clients.



The price of the construction work can be arranged in two ways: as a unit price and a fixed price. Unit price means that an offer was provided based on the pre-measurement of the activities from the detailed design, and the quantities are checked during the construction process and calculated during the arranged and additional work.



If the project documentation is detailed enough and will not be changed during the construction, we can offer fixed and unchangeable prices for the whole facility. For agreements with fixed prices, the purchaser does not have to take care of any additional work and can close the financial package without any fear of any additional costs.

## Our references:

Scan QR code





# Pre-stressed Hollow Core Slabs - PPB



## Small weight

A hollow core slab is an assembly pre-stressed element of light cross-section with pre-stressed ropes as the only reinforcement. PPB weight is 28-46% smaller than the weight of a full concrete cross-section of the same height.

## Great spacing

Pre-stressing enables surmounting greater spacing than is the case with regular construction. PPB may, without any additional operations, bridge over spacing up to 14 m without support which corresponds to the beam spacing of 15 m. This construction system requires fewer supporting elements, on a larger spacing, enabling faster and more economical building.

## Appearance

Hollow core slabs after manufacture and assembly do not require any additional operations and aesthetic corrections. Their manufacture takes place on specially prepared runways which results in extremely smooth lower surfaces. Automated manufacturing provides precise manufacturing of elements in equal dimensions, enabling their regular assembly in the structure.

## Fast and high-quality manufacturing

They are featured by high-quality manufacturing and material saving. The manufacturing process is fully automated. High-quality concrete and pre-stressing ropes have the required material attestations. The advantage of hollow core slabs in comparison to traditional constructions is in high manufacturing of elements at short notice with minimum working staff. Their assembly is also simple and fast. A great surface can be covered in a short time.

## Programme support

Hollow core slabs are designed and dimensioned in the FloorCAD licensed software, according to EC2 and BS8110. This software monitors the overall process from designing to manufacturing, as well as the transportation for assembly.

## Adjustable to every construction system

These slabs are not only applicable in reinforced concrete constructions but also in masonry and steel constructions, regardless of assembly or regular construction system. The basic use of hollow core slabs is within the construction between floors, but they are also used as the façade panels, beam elements, and bridge slabs.







## LOG EXPERT ONE

**Location:** Velika Gorica, Rijeka, Zdenčina - HR, Brnik - SLO  
**Type of building:** Logistics centers  
**Type of activities:** RC assembly construction  
**Surface:** 235.523,00 m<sup>2</sup>





# BINGO

**Location:** Sarajevo, Tuzla, Banovići, Čelić, Ključ

**Type of building:** Distribution and business centers

**Type of activities:** RC assembly construction and construction working activities

**Surface:** 127.300,00 m<sup>2</sup>





## MAHLE ELECTRIC DRIVES BOSNIA

**Location:** Laktaši  
**Type of building:** Business and manufacturing building  
**Type of activities:** Turnkey  
**Surface:** 30.908,00 m<sup>2</sup>





# YAVUZ - TEMPOPLAST

- Location:** Brčko, Živinice, Sarajevo, Srebrenik
- Type of building:** Warehouse building
- Type of activities:** RC assembly construction and construction working activities
- Surface:** 50.204,00 m<sup>2</sup>





# TEMAX

**Location:** Orašje  
**Type of building:** Warehouse buildings  
**Type of activities:** Turnkey  
**Surface:** 42.300,00 m<sup>2</sup>





# PMP JELŠINGRAD

- Location:** Gradiška, Laktaši
- Type of building:** Business and manufacturing building
- Type of activities:** RC assembly construction and construction working activities
- Surface:** 33.045,00 m<sup>2</sup>





# SPAR

**Location:** Klinča Sela  
**Type of building:** Distribution and logistics center  
**Type of activities:** RC assembly construction  
**Surface:** 32.450,00 m<sup>2</sup>





# PEVEX

**Location:** Vinkovci, Jankomir, Zabok, Gospić

**Type of building:** Distribution and warehouse building, Shopping centre

**Type of activities:** RC assembly construction

**Surface:** 30.542,00 m<sup>2</sup>





## LOGMAXX BETA

**Location:** Novi Banovci  
**Type of building:** Warehouse building  
**Type of activities:** RC assembly construction  
**Surface:** 29.167,00 m<sup>2</sup>





# CITY CENTAR CAZIN

**Location:** Cazin  
**Type of building:** Shopping centre  
**Type of activities:** RC assembly construction  
**Surface:** 28.000,00 m<sup>2</sup>





# MICK

**Location:** Zagreb

**Type of building:** Manufacturing buildings

**Type of activities:** RC assembly construction

**Surface:** 27.726,00 m<sup>2</sup>





# KLIMA OPREMA

**Location:** Nova Gradiška  
**Type of building:** Business building  
**Type of activities:** RC assembly construction  
**Surface:** 25.000,00 m<sup>2</sup>





# PP INVEST

- Location:** Križ, Zagreb
- Type of building:** Shopping and business building
- Type of activities:** RC assembly construction
- Surface:** 22.581,00 m<sup>2</sup>







# BOXMARK

**Location:** Lukavac  
**Type of building:** Manufacturing building  
**Type of activities:** Turnkey  
**Surface:** 22.500,00 m<sup>2</sup>





## LAGERMAX LOGISTICS CROATIA

**Location:** Zaprešić

**Type of building:** Warehouse building

**Type of activities:** RC assembly construction

**Surface:** 20.600,00 m<sup>2</sup>





# SIGMA L

Location:	Istočno Sarajevo
Type of building:	Business building
Type of activities:	RC assembly construction and construction working activities
Surface:	19.403,00 m <sup>2</sup>





# BOSANKAR

- Location:** Bosanska Krupa, Prijedor
- Type of building:** Business and manufacturing building
- Type of activities:** RC assembly construction and construction working activities
- Surface:** 18.610,00 m<sup>2</sup>





# STOP SHOP

- Location:** Velika Gorica, Gospić
- Type of building:** Shopping and business building
- Type of activities:** RC assembly construction
- Surface:** 17.700,00 m<sup>2</sup>





# INDEX

Location:	Gračanica
Type of building:	Business and manufacturing building
Type of activities:	RC assembly construction
Surface:	15.810,00 m <sup>2</sup>





# SPORTEK

**Location:** Kotor Varoš  
**Type of building:** Manufacturing building  
**Type of activities:** Turnkey  
**Surface:** 13.805,00 m<sup>2</sup>





## ISKRA TELA L

**Location:** Laktaši  
**Type of building:** Manufacturing building  
**Type of activities:** Turnkey  
**Surface:** 12.420,00 m<sup>2</sup>





# TEKVOR CARE

**Location:** Goražde  
**Type of building:** Manufacturing and warehouse building  
**Type of activities:** Turnkey  
**Surface:** 12.400,00 m<sup>2</sup>





# TERMOMONT - VACCINE FACTORY

- Location: Zemun, Serbia
- Type of building: Vaccine factory
- Type of activities: RC assembly construction
- Surface: 10.000,00 m²







# NORA PLAST

**Location:** Banja Luka  
**Type of building:** Business building  
**Type of activities:** RC assembly construction  
**Surface:** 9.380,00 m<sup>2</sup>





## TERMOMONT - COVID HOSPITAL

**Location:** Novi Sad, Belgrade, Serbia

**Type of building:** Hospital

**Type of activities:** RC assembly construction

**Surface:** 7.100,00 m<sup>2</sup>





# VOITH HYDRO BOSNIA

**Location:** Lukavac  
**Type of building:** Manufacturing and business building  
**Type of activities:** Turnkey  
**Surface:** 7.000,00 m<sup>2</sup>







# KALEA

- Location:** Ilijaš
- Type of building:** Business and warehouse building
- Type of activities:** RC assembly construction and construction working activities
- Surface:** 11.100,00 m<sup>2</sup>





# MAN HUMMEL

**Location:** Tešanj  
**Type of building:** Business building  
**Type of activities:** Turnkey  
**Surface:** 6.090,00 m<sup>2</sup>





# DB SCHENKER

**Location:** Banja Luka  
**Type of building:** Business building  
**Type of activities:** RC assembly construction  
**Surface:** 5.900,00 m<sup>2</sup>





## ELSTA MOSDORFER BOSNIA

**Location:** Živinice  
**Type of building:** Business building  
**Type of activities:** RC assembly construction  
**Surface:** 9.800,00 m<sup>2</sup>





# RAMA GLAS

**Location:** Sarajevo  
**Type of building:** Manufacturing building  
**Type of activities:** RC assembly construction  
**Surface:** 11.100,00 m<sup>2</sup>





# ALTERNATIVA

**Location:** Sarajevo  
**Type of building:** Business and warehouse building  
**Type of activities:** RC assembly construction  
**Surface:** 12.620,00 m<sup>2</sup>





# SPORTS HALL ISTOČNO SARAJEVO

**Location:** Istočno Sarajevo

**Type of building:** Sports hall

**Type of activities:** Steel construction - Roof span 55m





# BLOK - PEUGEOT

**Location:** Sarajevo

**Type of building:** Building for trade business

**Type of activities:** Steel construction

**Surface:** 1.200,00 m<sup>2</sup>

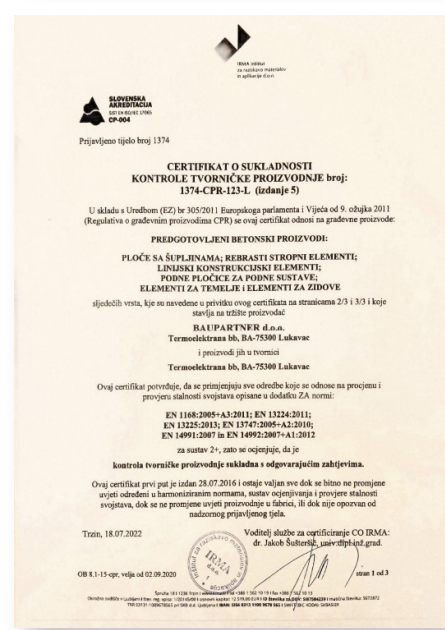
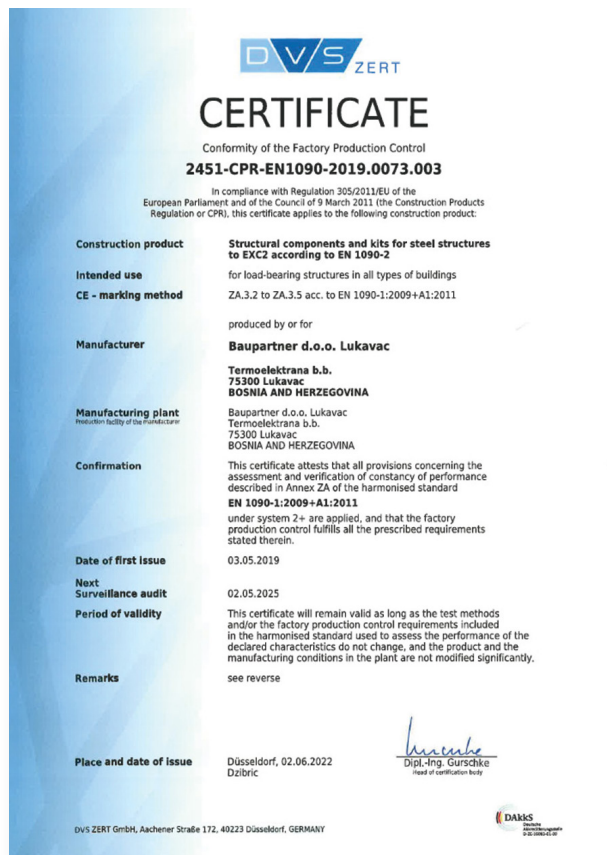




  
**BAUPARTNER**  
*We build for the future!*



# Certificates







**Built  
over  
2.500.000 m<sup>2</sup>**



**Baupartner d.o.o.**

Termoelektrana bb  
75300 Lukavac,  
Bosnia and Herzegovina

+387 35 560 500

+387 35 560 501

info@baupartner.ba

www.baupartner.ba



**S-Baupartner d.o.o.**

Jurija Gagarina 28/21  
11070, New Belgrade, Serbia

+381 11 228 1612

+381 65 880 5202

office@s-baupartner-mont.rs

www.s-baupartner-mont.rs



**H-Baupartner d.o.o.**

Savska cesta 84  
10000 Sesvete, Croatia

+385 91 6222 030

+385 91 6222 031

alen.mesaric@baupartner.ba

www.baupartner.ba